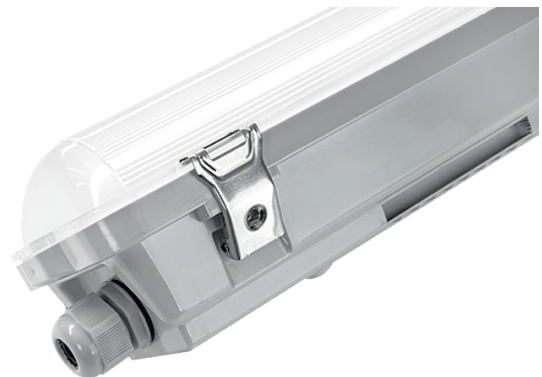


Product datasheet

LTP-1176-34W

LED waterproof light 34 W
3000 K - 4000 K - 6000 K

- Placement in work spaces, health care institutions, warehouses, ..
- Lower electricity consumption - clearer light
- Long life span
- LG LED / OSRAM DRIVER



General information

• Model	LTP-1176-34W
• LED chip	LG SMD 2835
• Body material	Plastic + glass
• Environment	Indoor lighting
• Placement	Industrial and work spaces lighting
• Product color	White + grey
• IP Protection Rate	IP66
• Operating temperature	from - 20 °C to 35 °C
• IK protection rate	IK 08
• Weight	1,665 kg

Electrical Specifications

• Power Consumption	34 W
• Input Voltage	AC 220 - 240 V / 50 - 60 Hz
• Dimmable Function	No
• Replacing LED	No
• Replacing Power Supply	No
• LED driver	OSRAM

Lighting Specifications

- | | |
|----------------------------|------------------------------|
| • Luminous flux | 4760 lm |
| • Luminous efficiency | 140 lm / W |
| • Color of the light | Optional / switch built - in |
| • CCT | 3000 K - 4000 K - 6000 K |
| • Color Render Index (CRI) | > 80 |
| • Beam Angle | 120 ° |
| • Life Span | 50 000 working hours |

Packing Information

- | | |
|----------------------|--------------------|
| • Package dimensions | 1205 x 105 x 85 mm |
| • Gross Weight | 1,945 kg |
| • Transport package | 9 pieces |

Dimensions

- | | |
|----------------------|-------------------|
| • Product dimensions | 1176 x 95 x 80 mm |
|----------------------|-------------------|